

SPARE PARTS SECTION

WOOD BAND SAW

Models

BP-255, BP-310, BP-360

Order Code W950, Code W952, Order Code W955

Edition No : WBS-003

Date of Issue : 07/2020

The following section covers the spare parts diagrams and lists that were current at the time this manual was originally printed. Due to continuous improvements of the machine, changes may be made at any time without notification.

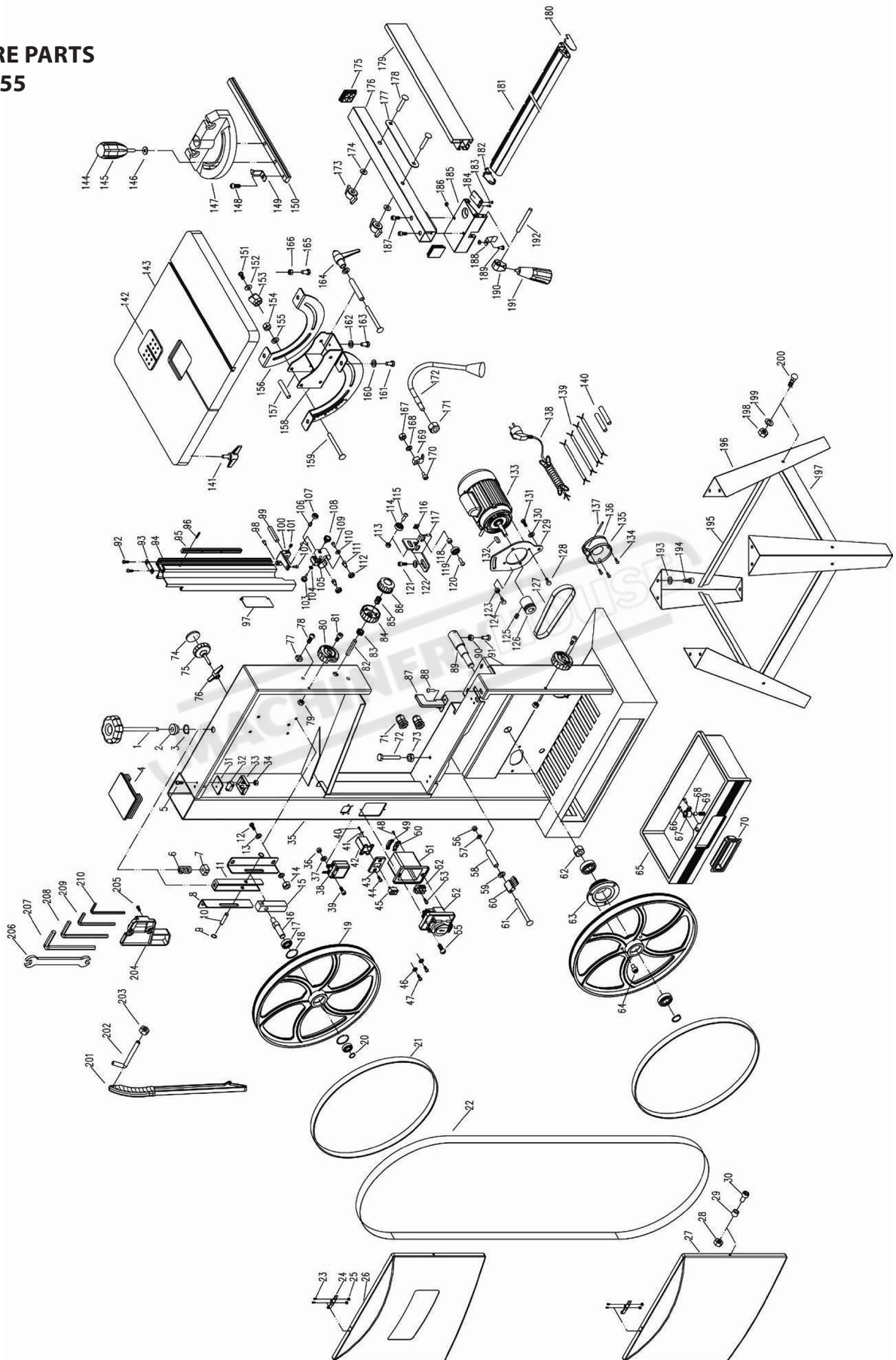
HOW TO ORDER SPARE PARTS

1. Have your machines **model number, serial number & date of manufacture** on hand, these can be found on the specification plate mounted on the machine
2. A scanned copy of your parts list/diagram with required spare part/s identified
3. Go to www.machineryhouse.com.au/contactus and fill out the enquiry form attaching a copy of scanned parts list.

CONTENTS

BP-255 Spare Parts.....	25
BP-255 Spare Parts List.....	26
BP-310, 360 Spare Parts.....	29
BP-310, 360 Spare Parts List.....	30

**SPARE PARTS
BP-255**



BP-255 SPARE PARTS LIST

No.	Description	Qty	No.	Description	Qty
1	Blade tension knob	1	51	Switch box	1
2	Bushing	1	52	Connecting terminal	1
3	Retaining ring	1	53	Thread forming screw	1
4	Frame cap	1	54	Main switch	1
5	Pan head screw	4	55	Pan head screw	2
6	Spring	1	56	Nut	1
7	Nut	1	57	Flat washer	1
8	Retaining ring	2	58	Bushing	1
9	Shaft	1	59	Flat washer	1
10	Guide plate	2	60	Brush	1
11	Pulling plate	1	61	Carriage bolt	1
12	Hex head bolt	4	62	Hex nut	1
13	Flat washer	8	63	Spindle pulley	1
14	Hex nut	4	64	Socket head bolt	3
15	bevel block	1	65	Dust drawer	1
16	Shaft	1	66	Thread forming screw	2
17	Ball bearing	4	67	Ball house	1
18	Retaining ring	4	68	Ball	1
19	Upper wheel	1	69	Spring	1
20	Retaining ring	2	70	Drawer handle	1
21	Tyre	2	71	Cord bushing	2
22	Blade	1	72	Limiting shaft	1
23	Pan head screw	4	73	Hex nut	1
24*	Interlock switch key	2	74	Knob cap	1
25*	Hex nut	4	75	Tracking set knob	1
26	Upper cover	1	76	Tracking lock knob	1
27	Lower cover	1	77	Guide block	2
28	Lock nut	2	78	Pan head screw	2
29	Bushing	2	79	Lock nut	2
30	Socket head bolt	2	80	Cover lock knob	2
31*	Cover	2	81	Socket head bolt	2
32*	Interlock switch	2	82	Shaft	1
33*	Switch	2	83	Gear	1
34*	Hex nut	4	84	Upper guide adjusting knob	1
35	Frame	1	85	Spring	1
36	Nut	1	86	Lock knob	1
37	Flat washer	1	87	Lower guard	1
38	LED driver	1	88	Socket head bolt	2
39	Socket head bolt	1	89	Shaft	1
40	Thread forming screw	1	90	Hex nut	4
41	Cord clamp	1	91	Hex head bolt	4
42	Led switch box	1	92	Thread forming screw	2
43	Switch cover	1	93	Limiting plate	1
44	Pan head screw	2	94	Upper blade guard	1
45	LED switch	1	95	Rack	1
46	Serrated washer	2	96	Pin	2
47	Pan head screw	2	97	Sliding cover	1
48	Thread forming screw	4	98	Socket head bolt	1
49	Cord clamp	1	99	Connecting shaft	1
50	Cord clamp	1	100	Support block	1

BP-255 SPARE PARTS LIST

No.	Description	Qty	No.	Description	Qty
101	Set screw	1	151	Pan head screw	1
102	Thread forming screw	1	152	Flat washer	1
103	Knob	1	153	Pointer	1
104	Flat washer	1	154	Lock nut	1
105	Bearing cover	1	155	Flat washer	2
106	Shaft	1	156	Angle guide plate	2
107	Ball bearing	1	157	Bushing	2
108	Knob	1	158	Table beveling base	1
109	Socket head bolt	2	159	Carriage blot	2
110	Flat washer	2	160	Flat washer	4
111	Shaft	2	161	Hex head bolt	4
112	Ball bearing	2	162	Flat washer	4
113	Hex nut	1	163	Hex head bolt	4
114	Ball bearing	1	164	Lock handle	1
115	Socket head bolt	1	165	Hex head bolt	1
116	Nut	2	166	Hex nut	1
117	Lower guide plate	1	167	Nut	1
118	Bushing	2	168	Flat washer	1
119	Ball bearing	2	169	Cord clamber	1
120	Socket head bolt	2	170	Socket head bolt	1
121	Socket head bolt	2	171	Hex nut	1
122	Flat washer	2	172	LED light	1
123	Hex nut	2	173	Knob	2
124	Socket head bolt	2	174	Flat washer	2
125	Set screw	1	175	Fence support cap	2
126	Motor pulley	1	176	Fence support	1
127	Belt	1	177	Guide plate	1
128	Hex head bolt	4	178	Carriage blot	2
129	Motor support plate	1	179	Fence	1
130	Flat washer	2	180	Guide rail cap	1
131	Socket head bolt	2	181	Guide rail	1
132	Key	1	182	Guide rail cap	1
133	Motor	1	183	Thread forming screw	2
134	Thread forming screw	3	184	Pointer	1
135	Dust port	1	185	Sliding base	1
136	Dust port cover	1	186	Nut	3
137	Pin	1	187	Socket head bolt	1
138	Power cord	1	188	Spring plate	1
139	Inner cord	4	189	Pan head screw	1
140	Flexible tube	2	190	Lock block	1
141	Guide rail lock knob	4	191	Lock handle	1
142	Table insert	1	192	Shaft	1
143	Table	1	193	Flat washer	8
144	Cap	1	194	Socket head bolt	8
145	Handle	1	195	Long brace	2
146	Washer	1	196	Leg	4
147	Miter gauge	1	197	Short brace	2
148	Pan head screw	1	198	Hex nut	8
149	Pointer	1	199	Flat washer	8
150	Rod	1	200	Carriage blot	8

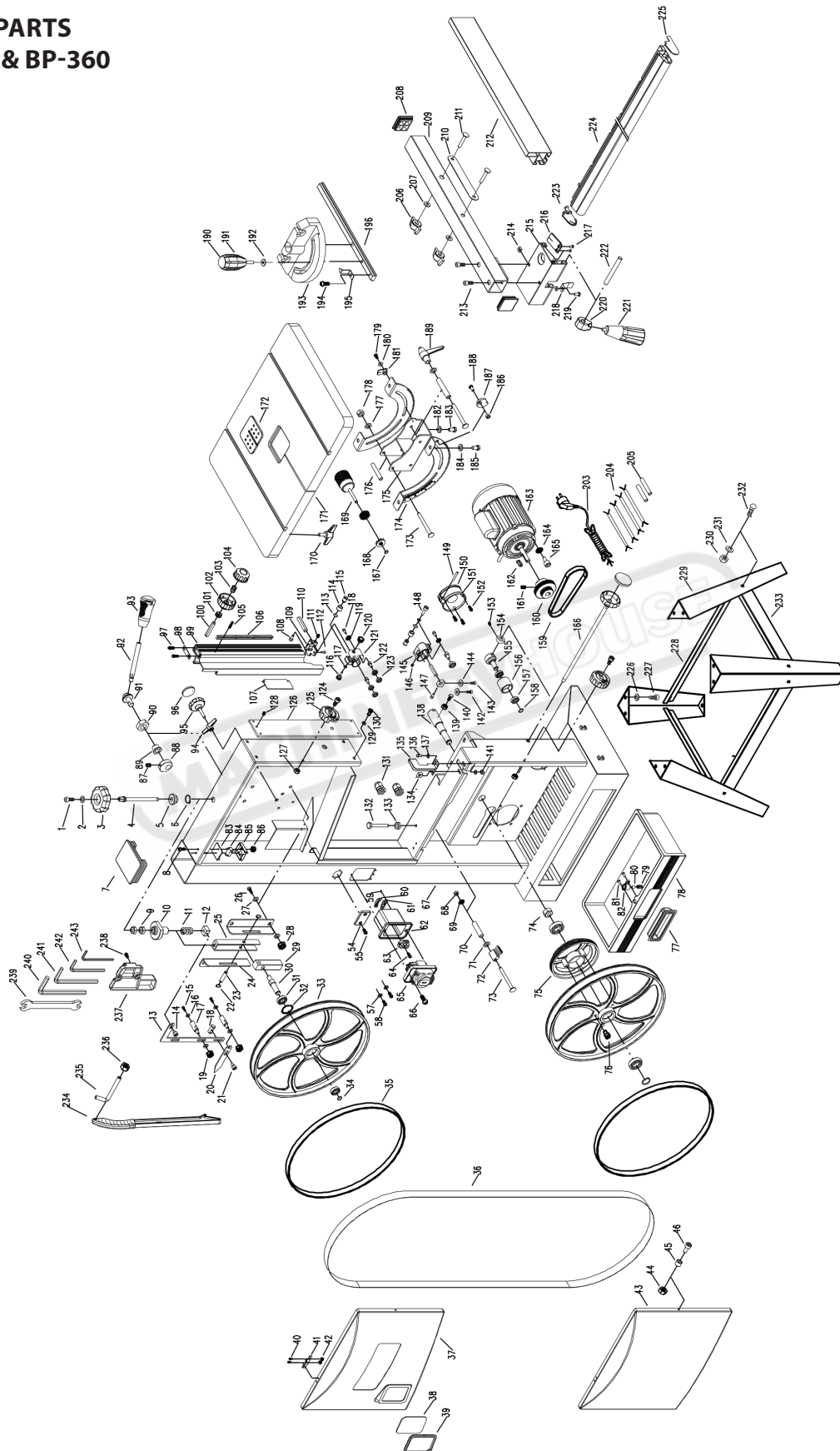
OPERATION MANUAL

BP-255 SPARE PARTS LIST

No.	Description	Qty
201	Push stick	1
202	Hook	1
203	Hex nut	1
204	Rack	1
205	Pan head screw	2
206	Open spanner	1
207	6mm hex wrench	1
208	5mm hex wrench	1
209	4mm hex wrench	1
210	3mm hex wrench	1

MACHINERYHOUSE

**SPARE PARTS
BP-310 & BP-360**



OPERATION MANUAL

BP-310 & BP-360 SPARE PARTS LIST

No.	Description	Qty	No.	Description	Qty
1	Socket head screw	1	51	Thread forming screw	1
2	Flat washer	1	52	Cord clamp	1
3	Blade tension knob	1	53	Led switch box	1
4	Screw	1	54	Switch cover	1
5	Bushing	1	55	Pan head screw	2
6	Retaining ring	1	56	LED switch	1
7	Frame cap	1	57	Serrated washer	2
8*	Pan head screw	4	58	Pan head screw	2
9	Hex nut	2	59	Thread forming screw	4
10	Tension bracket	1	60	Cord clamp	1
11	Spring	1	61	Cord clamp	1
12	Nut	1	62	Switch box	1
13	Connecting plate	1	63	Connecting terminal	1
14	Bolt	1	64	Thread forming screw	1
15	Hex head bolt	3	65	Main switch	1
16	Flat washer	6	66	Pan head screw	2
17	Guide rod	3	67	Frame	1
18	Nut	1	68	Nut	1
19	Lock nut	3	69	Flat washer	1
20	Blade tension pointer	1	70	Bushing	1
21	Bolt	1	71	Flat washer	1
22	Retaining ring	2	72	Brush	1
23	Shaft	1	73	Carriage blot	1
24	Guide plate	2	74	Hex nut	1
25	Pulling plate	1	75	Spindle pulley	1
26	Hex head bolt	4	76	Socket head screw	3
27	Flat washer	8	77	Drawer handle	1
28	Hex nut	4	78	Dust drawer	1
29	bevel block	1	79	Spring	1
30	Shaft	1	80	Ball	1
31	Ball bearing	4	81	Thread forming screw	2
32	Retaining ring	4	82	Ball house	1
33	Upper wheel	2	83*	Cover	2
34	Retaining ring	2	84*	Interlock switch	2
35	Tyre	2	85*	Switch	2
36	Blade	1	86*	Hex nut	4
37	Upper cover	1	87	Set screw	1
38	Viewing window	1	88	Cam	1
39	Window case	1	89	Bushing	1
40*	Pan head screw	4	90	Nut	1
41*	Interlock switch key	2	91	Shaft	1
42*	Hex nut	4	92	Handle	1
43	Lower cover	1	93	Handle cap	1
44	Lock nut	2	94	Tracking set knob	1
45	Bushing	2	95	Tracking lock knob	1
46	Socket head screw	2	96	Cap	2
47	Nut	1	97	Thread forming screw	2
48	Flat washer	1	98	Limiting plate	1
49	LED driver	1	99	Upper blade guard	1
50	Socket head screw	1	100	Shaft	1

OPERATION MANUAL

BP-310 & BP-360 SPARE PARTS LIST

No.	Description	Qty	No.	Description	Qty
101	Gear	1	151	Dust port	1
102	Upper guide adjusting knob	1	152	Pan head screw	3
103	Spring	1	153	Set screw	1
104	Lock knob	1	154	Bushing	1
105	Rack	1	155	Idle pulley shaft	1
106	Pin	2	156	Idle pulley	1
107	Sliding cover	1	157	Ball bearing	2
108	Socket head bolt	1	158	Retaining ring	1
109	Support block	1	159	Belt	1
110	Connecting shaft	2	160	Motor pulley	1
111	Set screw	1	161	Set screw	1
112	Thread forming screw	2	162	Key	1
113	Retaining ring	2	163	Motor	1
114	Bearing	2	164	Flat washer	4
115	Shaft	2	165	Socket head screw	4
116	Knob	1	166	Belt tension knob	1
117	Flat washer	1	167	Retaining ring	1
118	Socket head screw	2	168	Gear	2
119	Flat washer	2	169	Table adjusting knob	1
120	Knob	1	170	Lock knob	4
121	Guide block	1	171	Table	1
122	Shaft	4	172	Table insert	1
123	Ball bearing	8	173	Carriage bolt	2
124	Socket head screw	2	174	Angle guide plate	2
125	Cover lock knob	2	175	Table beveling base	1
126	Guide plate	1	176	Bushing	2
127	Lock nut	2	177	Flat washer	2
128	Set screw	1	178	Lock nut	1
129	Flat washer	4	179	Pan head screw	1
130	Hex head bolt	4	180	Flat washer	1
131	Cord bushing	2	181	Pointer	1
132	Limiting shaft	1	182	Flat washer	4
133	Hex nut	1	183	Hex head bolt	4
134	Guide block	1	184	Flat washer	4
135	Lower guard	1	185	Socket head screw	4
136	Hex head bolt	1	186	Hex nut	4
137	Flat washer	2	187	Limiting plate	1
138	Shaft	1	188	Hex head bolt	1
139	Hex nut	4	189	Locking handle	1
140	Hex head bolt	4	190	Cap	1
141	Hex nut	1	191	Handle	1
142	Hex head bolt	1	192	Washer	1
143	Hex head bolt	1	193	Miter gauge	1
144	Flat washer	2	194	Pan head screw	1
145	Guide block	1	195	Pointer	1
146	Set screw	1	196	Rod	1
147	Socket head screw	1	197	Socket head screw	1
148	Socket head screw	1	198	Cord clamp	1
149	Pin	1	199	Flat washer	1
150	Dust port cover	1	200	Nut	1

OPERATION MANUAL**BP-310 & BP-360 SPARE PARTS LIST**

No.	Description	Qty	No.	Description	Qty
201	Hex nut	2	235	Hook	1
202	LED driver	1	236	Hex nut	1
203	Power cord	1	237	Rack	1
204	Inner cord	4	238	Pan head screw	2
205	Flexible tube	2	239	Open spanner	1
206	Knob	2	240	6mm hex wrench	1
207	Flat washer	2	241	5mm hex wrench	1
208	Fence support cap	2	242	4mm hex wrench	1
209	Fence support	1	243	3mm hex wrench	1
210	Guide plate	1			
211	Carriage blot	2			
212	Fence	1			
213	Socket head bolt	2			
214	Nut	3			
215	Sliding base	1			
216	Pointer	1			
217	Thread forming screw	2			
218	Spring plate	1			
219	Pan head screw	1			
220	Lock block	1			
221	Lock handle	1			
222	Shaft	1			
223	Guide rail cap	1			
224	Guide rail	1			
225	Guide rail cap	1			
226	Flat washer	8			
227	Socket head screw	8			
228	Long brace	2			
229	Leg	4			
230	Hex nut	8			
231	Flat washer	8			
232	Carriage blot	8			
233	Short brace	2			
234	Push stick	1			